

Jabra  
Talk 30



User manual

1. Welcome.....	3
2. Jabra Talk 30 overview .....	4
2.1 Included accessories	
3. How to wear .....	5
3.1 Attaching the EarGels	
4. How to charge .....	7
4.1 What the LEDs mean	
4.2 Power Nap	
5. How to pair .....	9
5.1 Pairing with a smartphone	
5.2 Pairing with a smartphone using NFC	
6. How to use .....	11
6.1 Calls	
6.2 Automatic volume control	
6.3 Voice assistant	
6.4 Multiple call handling	
6.5 How to reset	
7. Jabra Assist app .....	15
8. Support .....	16
8.1 FAQ	
8.2 How to care for your headset	

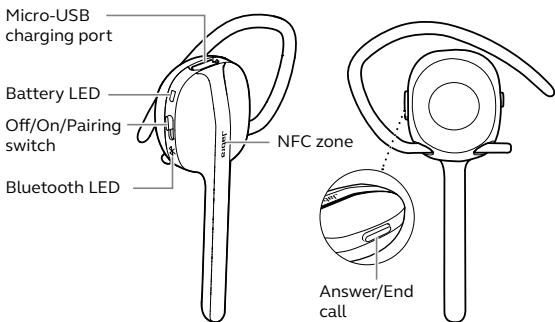
# 1. Welcome

Thank you for using the Jabra Talk 30. We hope you will enjoy it!

## **Jabra Talk 30 features**

- Voice guidance
- Long talk time - up to 5 hours (smartphone dependent)
- Wireless freedom - up to 10m/33ft
- Battery and pairing status display
- HD Voice
- Power Nap for extended standby time up to 180 days (smartphone dependent)
- NFC for easy pairing

## 2. Jabra Talk 30 overview



### 2.1 Included accessories

---



USB cable



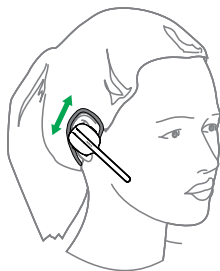
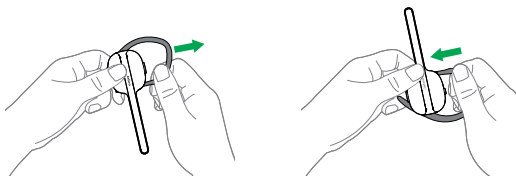
Looped EarGel

### 3. How to wear

The Jabra Talk 30 can be worn on either the left or the right ear.

To switch ear:

1. Remove the attached EarHook.
2. Flip the headset and re-insert the Earhook.
3. Adjust the height of the Earhook up or down for the best fit.



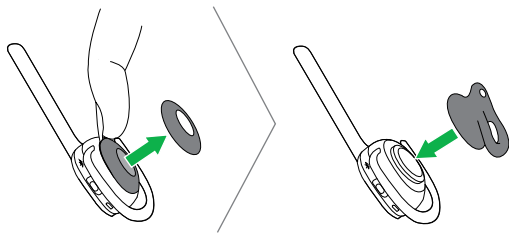
### 3.1 Attaching the EarGels

---

For the optimal audio experience, it is recommended to try each of the EarGel shapes. The fit should feel secure in your ear. Ensure the EarGel is firmly attached.

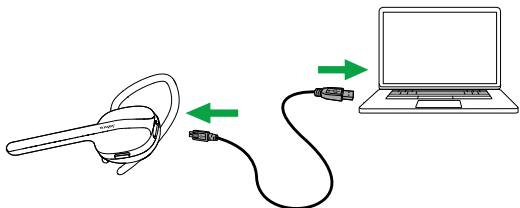
To change EarGel:

1. Remove the attached EarGel using your fingernail (as illustrated).
2. Attach the new EarGel and ensure it clicks into place.



## 4. How to charge

It is recommended to charge the headset using the supplied USB charging cable. It takes approx. 2 hours to fully charge the battery.



Note: Always clean and dry the USB charging port before charging the headset. It is recommended to recharge the headset at least once a month. For safety reasons, it is recommended not to use the headset while it is charging.

### 4.1 What the LEDs mean

---

#### BATTERY LED



Power on/off



High battery/Charging



Low battery

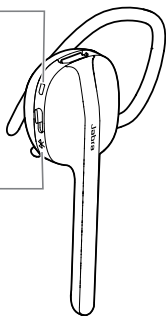
#### BLUETOOTH LED



Pairing



Connected



## 4.2 Power Nap

---

To extend standby time the headset will automatically enter Power Nap mode when the headset is out of range of your connected mobile device for more than 1 hour. Power Nap provides up to 180 days of battery readiness/standby time.

To exit Power Nap simply turn off and turn on the headset. Your Smartphone must be switched on, within range, and have Bluetooth enabled.

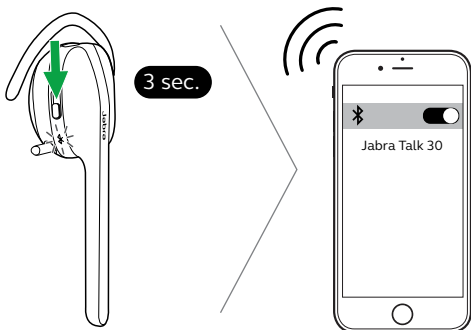


# 5. How to pair

## 5.1 Pairing with a smartphone

---

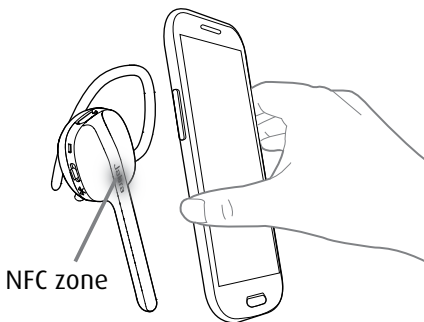
1. Press and hold (3 sec.) the **Off/On/Pairing** switch in the pairing position. The Bluetooth LED will flash blue.
2. Turn on Bluetooth on your smartphone and select Jabra Talk 30 from the list of available Bluetooth devices.



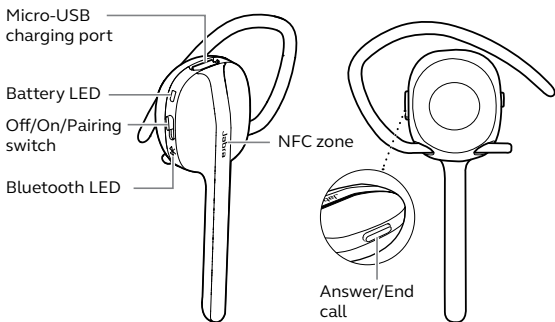
## 5.2 Pairing with a smartphone using NFC

---

1. Power on the headset.
2. Ensure NFC is enabled on your smartphone.
3. Touch the NFC zone on the headset against the NFC zone on your smartphone until a connection is confirmed.

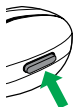


## 6. How to use



### 6.1 Calls

Calls	
Answer/end call	Press the <b>Answer/End call</b> button
Activate Siri or Google Assistant or Cortana (phone dependent)	Press and hold (1 sec.) the <b>Answer/End call</b> button
Reject call	Double-press the <b>Answer/End call</b> button
Redial last number	Double-press the <b>Answer/End call</b> button, when not on a call



## 6.2 Automatic volume control

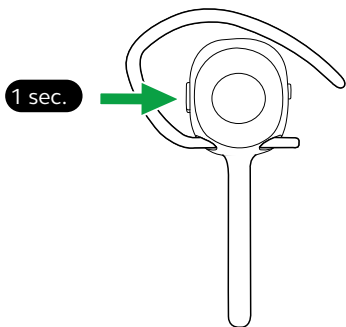
---

The headset intelligently adjusts the volume of your calls for the optimal sound quality, depending on your surrounding background noise. To manually adjust the volume, use the volume controls on your smartphone.

## 6.3 Voice assistant

---

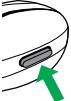
To activate your smartphone's voice assistant (e.g. Siri, Google Assistant, Cortana) press and hold the **Answer/End call** button (1 sec.) when not on a call. Release the button when you hear a beep.



## 6.4 Multiple call handling

---

The headset can answer or reject calls when you are already on a call.

Multiple call handling		
End current call and answer incoming call	Press the <b>Answer/End call</b> button	
	Put current call on hold and answer incoming call	Press and hold (1 sec.) the <b>Answer/End call</b> button
	Switch between held call and active call	Press and hold (1 sec.) the <b>Answer/End call</b> button
Reject incoming call, when on a call	Double-tap the <b>Answer/End call</b> button	

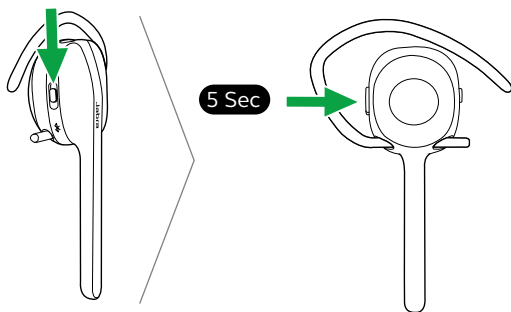
---

## 6.5 How to reset

---

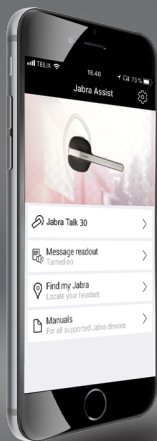
Resetting the headset clears the list of paired devices and resets all settings.

1. Power on the headset.
2. Press and hold (5 secs) the **Answer/End call** button until you hear 'Disconnected'.



After the headset has been reset, it will need to be re-paired to your smartphone.

# 7. Jabra Assist app



Jabra Assist app



Find my headset



Message readout



Help at your  
fingertips



# 8. Support

## 8.1 FAQ

---

View the FAQs on [Jabra.com/talk30](http://Jabra.com/talk30).

## 8.2 How to care for your headset

---

- Always store the headset with the power off and safely protected.
- Avoid storage at extreme temperatures (above 35°C/95°F or below -20°C/-4°F). This can shorten battery life and may affect the headset operation.
- Do not expose the headset to rain or other liquids.



© 2018 GN Audio A/S. All rights reserved. Jabra® is a trademark of GN Audio A/S. The Bluetooth® word mark and logos are registered trademarks owned by the Bluetooth SIG, Inc. and any use of such marks by GN Audio A/S is under license.

---

Made in China  
MODEL: OTE14



 **Bluetooth®**

---

**Declaration of Conformity** can be found on  
[www.jabra.com/doc](http://www.jabra.com/doc)